

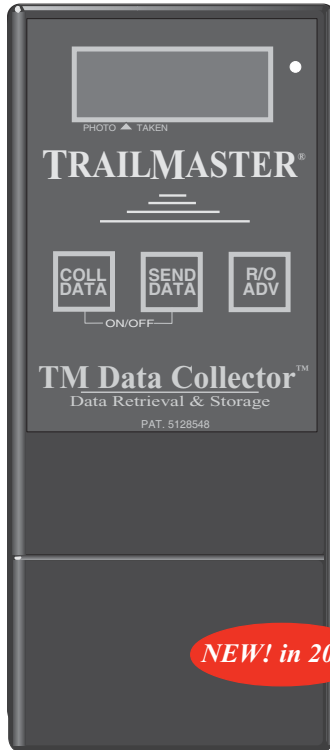
TRAILMASTER®

Printing and Data Management Accessory

TM Data Collector II™ Data Retrieval and Storage System

Use with TM StatPack Software for
most efficient data analysis

Accessory for: **TM1550 (1500),
TM550 (500),
TM700v, TM700vRT**



Includes:
TM Data Collector II w / RS232 connector
TM Collector Cable

Features:
59,000 Event Memory
Non-volatile Memory
NEW! Menu-driven capability when used
with TMStatPack ver.69 or above
Operation Temperature : -40° to +130°

NEW! in 2005

TM DATA COLLECTOR
7.5"L x 3.5"W x 2.1"D
Weight: 1 lb.
Power: 4 c-cell batteries
(ALKALINE)

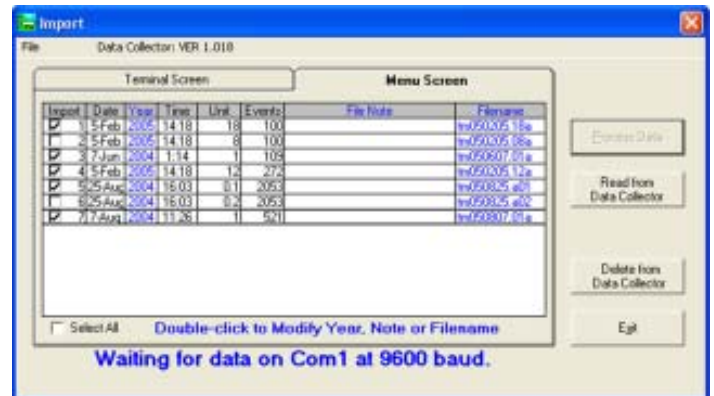
OPTIONAL ACCESSORY for TM Data Collector II
TM Stat Pack Software/Cable

The TRAILMASTER TM DATA COLLECTOR II is a data retrieval device used to retrieve and store data which has been recorded by TRAILMASTER Infrared Trail Monitors. The TM DATA COLLECTOR II is carried to each monitor, connected with a cable, and the data is quickly transferred. This allows the TRAILMASTER trail monitors to remain in the field collecting new data while the collected data is carried back to be printed out and analyzed.

The NEW! TM DATA COLLECTOR II is designed to hold 59,000 events by date and time. This information is stored in non-volatile memory and is not lost when batteries are changed. Each standard TRAILMASTER trail monitor can store 1000 events. (Expanded memory monitors can store more events.) The NEW! TM DATA COLLECTOR II can store event data from many TRAILMASTER trail monitors -- more than 59,000 total events. The data is collected and stored by unit numbers, making it easy to keep track of data from various locations. When used with the NEW! TM STATPACK software, data can be viewed using a new advanced catalog function. Menu-driven operation* is available when used with TM STATPACK software ver. 2004.1214.69 and above.

For the most efficient data handling, the TM DATA COLLECTOR II is designed to be used with an IBM compatible computer using the TM STATPACK software for data analysis; however, the data can be read out manually from the TM DATA COLLECTOR II.

Larger memory configurations are available.



*NEW! Menu-driven Operation Screen
available when used with TM StatPack Software ver.69 and higher

Holds over 59,000 events • Operates on 4 C-cell batteries • Compact and easy to use • Non-volatile Memory

FOR A FREE CATALOG or
ORDER 1-800-544-5415

TRAILMASTER Infrared Trail Monitors • 10614 Widmer • Lenexa, KS 66215 • TEL 913-345-8555 • FAX 913-345-8272 • sales@trailmaster.com
www.trailmaster.com